

HOME  
IS OUR  
STORY

**TO LET R8,200 p.m.**

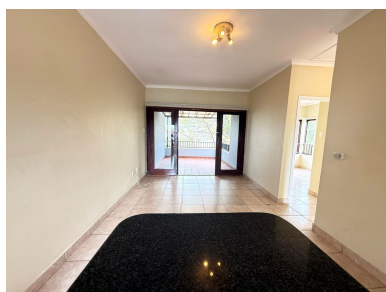
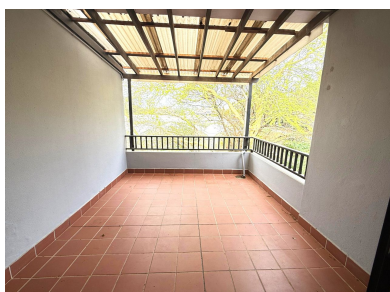
**1 SHEFFIELD GARDENS, UNIT 66 SHEFFIELD  
GARDENS, SHEFFIELD MANOR**

**Seeff**



[youtube.com/c/seeffzimbali/](https://youtube.com/c/seeffzimbali/)

[www.seeff.com: RLS989148](http://www.seeff.com: RLS989148)



## TOP FLOOR TWO-BEDROOM UNIT IN SHEFFIELD GARDENS

 2  1  0

Positioned on the top floor of the private Sheffield Gardens complex, this inviting 2-bedroom unit offers a peaceful retreat with leafy, green surrounds. The living area seamlessly opens onto a spacious balcony, perfect for enjoying the tranquil outlook and casual entertaining. The unit features two bedrooms and a shared bathroom. A small storage area is added beneath the staircase for added convenience.



**Dalene Govindasamy**

**082 333 6607**

[dalene.govindasamy@seeff.com](mailto:dalene.govindasamy@seeff.com)

**Scan here  
to view  
full listing**



**Floor Size** 63m<sup>2</sup>  
**Furnished** No

**Study** No  
**Staff Accommodation** No

**Pool** Yes  
**Pets Allowed** No

