

HOME
IS OUR
STORY

FOR SALE R1,500,000

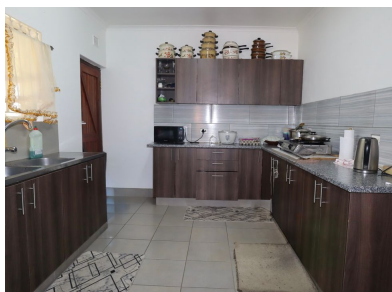
15 BYRNE ROAD, TOWNVIEW

Seeff



youtube.com/c/seeffzimbali/

www.seeff.com: RLS987487



SPACIOUS FAMILY HOME WITH A LUSH GARDEN

 4  2  0

Nestled in the heart of the highly desirable Townview neighborhood, this home is designed with both comfort and convenience in mind. The property has a fully fitted modern kitchen that seamlessly flows into an open-plan dining area. The four bedrooms are generously sized and come complete with built-in cupboards, providing plenty of storage space. Step outside and enjoy a beautifully maintained garden, ideal for outdoor relaxation, gardening, or creating the perfect play area for children



Reena Cassim

073 627 9301

reena.cassim@seeff.com

Scan here
to view
full listing



Land Size 1,012m²
Floor Size 142m²

Staff Accommodation No
Study No
Pets Allowed Yes

Rates R446.00
Estate Levy -

