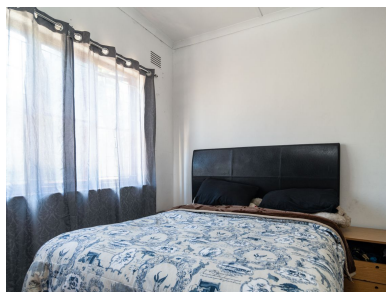


[youtube.com/c/seeffzimbali/](https://youtube.com/c/seeffzimbali/)[www.seeff.com: RLS985273](https://www.seeff.com: RLS985273)

## A LOVELY, SPACIOUS FAMILY HOME WITH A FLATLET



This exceptional property offers the perfect combination of comfort, convenience, and investment potential. The home sits on a large, fully fenced yard with an electric gate and secure lock-up garage, ensuring privacy and safety. What truly sets this property apart is the spacious 3-bedroom flatlet with a private entrance, one bathroom, and an open-plan kitchen and dining area. It's perfect for extended family, guests, or rental income, adding tremendous value and flexibility. There's plenty of outdoor space for children to play freely.

**Reena Cassim****073 627 9301**

reena.cassim@seeff.com

Scan here  
to view  
full listing



**Land Size** 943m<sup>2</sup>  
**Floor Size** 154m<sup>2</sup>

**Staff Accommodation** No  
**Study** No  
**Pets Allowed** Yes

**Rates** R366.00  
**Estate Levy** -

