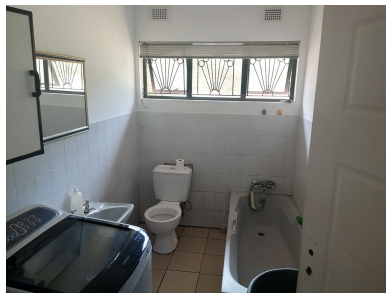




[youtube.com/c/seeffzimbali/](https://youtube.com/c/seeffzimbali/)

[www.seeff.com: RLS975730](http://www.seeff.com: RLS975730)



**NEAT FAMILY HOME WITH A LARGE, FULLY SECURED GARDEN**

3    2    1

The location of the property means that residents benefit from a peaceful neighbourhood atmosphere, while being just moments away from essential amenities. It has a large, neat garden that is overlooked by a cozy patio, offering a delightful shady spot to unwind, surrounded by a neat garden. The open plan lounge and dining areas are open plan and bathed in natural light, creating a warm and welcoming atmosphere. The kitchen has modern finishes, plenty of cupboards and an under-counter oven.



**Reena Cassim**

**073 627 9301**

[reena.cassim@seeff.com](mailto:reena.cassim@seeff.com)

Scan here to view full listing



**Land Size** 1,175m<sup>2</sup>  
**Floor Size** 167m<sup>2</sup>

**Staff Accommodation** No  
**Study** No  
**Pets Allowed** Yes

**Rates** R450.00  
**Estate Levy** -

