

HOME
IS OUR
STORY

FOR SALE R1,400,000

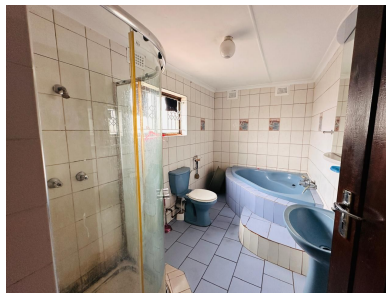
190 VILLAGE ROAD, GLEDHOW

Seeff



[youtube.com/c/seeffzimbali/](https://www.youtube.com/c/seeffzimbali/)

www.seeff.com: RLS969867



SPACIOUS 6-BEDROOM HOME WITH PRIME CORNER PLOT LOCATION

 6  3  2

Discover this stunning 6-bedroom home perfectly positioned on a corner plot, offering the ultimate blend of comfort and convenience. This spacious property boasts 2 lounges, 2 kitchens, a dining room, and 3 bathrooms, ensuring ample space for a large family or potential tenants. With features like a veranda, balcony, and 2-sided awning, this home is ideal for both relaxation and outdoor entertainment. The property is also equipped with 2 automated driveways, a double garage, and is fully secured with burglar bars and palisade fencing.



Reena Cassim

073 627 9301

reena.cassim@seeff.com

Scan here
to view
full listing



Land Size 390m²

Floor Size 220m²

Staff Accommodation No

Study Yes

Pets Allowed Yes

Rates R545.32

Estate Levy -

