

**HOME
IS OUR
STORY**

FOR SALE R4,250,000

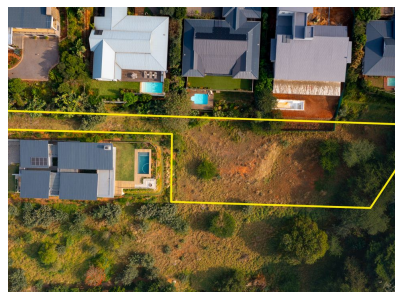
3 TOAD TREE CLOSE, ERF 965, SIMBITHI ECO ESTATE

Seeff



youtu.be/pzY05_0DnGc

www.seeff.com: RLS939218



BUILD YOUR ARCHITECTURAL MASTERPIECE ON THIS PANHANDLE LAND

An amazing land opportunity awaits the discerning buyer to build their dream home in one of North Coast's most sought-after gated estates. A panhandle driveway leads up to the property, which offers an amazing view of the golf course, as well as a dam view. The extent of the site is 2090 sqm, providing plenty of space to build a comfortable family home. Simbithi is ideally located just minutes away from several major shopping malls, outstanding healthcare facilities, and an array of exceptional schools. The estate offers a delicate balance between nature and development.



Andreas Wassenaar

082 837 9094

andreasw@seeff.com

**Scan here
to view
full listing**



Land Size 2,090m²

Rates R2,100.00

Estate Levy R3,217.60

