

HOME
IS OUR
STORY

FOR SALE R4,100,000

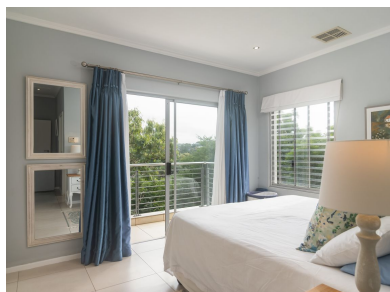
28 FEVERBERRY WAY, UNIT 7 MSINTSI TWELVE,
SIMBITHI ECO ESTATE

Seeff



youtube.com/c/seeffzimbali/

www.seeff.com: RLS981047



SPACIOUS SIMBITHI TOWNHOUSE WITH PRIVATE GARDEN, BALCONY

 4  4  2

This well-presented four-bedroom townhouse is located within Msintsi, a sought-after sectional title development in Simbithi Golf Estate. Offering a modern, family-friendly layout and a spacious garden, this home is ideal for relaxed coastal living. The lower level features an open-plan living and dining area flowing out to a covered patio and a large, level garden—perfect for entertaining or adding a splash pool. The upgraded kitchen includes a built-in coffee station, centre island with seating, and sleek finishes throughout. Two generously sized bedrooms are located on the lower level with garden access.



Yeshlin Gounden

083 229 4309

yeshlin.gounden@seeff.com

Scan here
to view
full listing



Land Size 9,175m²
Floor Size 194m²

Rates R2,939.00
Estate Levy R3,968.00
Sectional Title Levy R2,654.00

Pool Yes
Pets Allowed Yes

