

HOME IS OUR STORY

FOR SALE R9,985,000

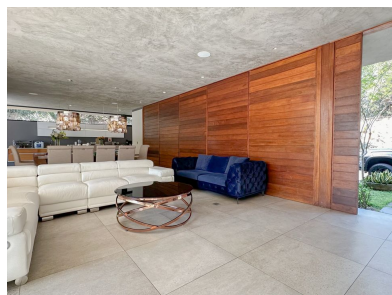
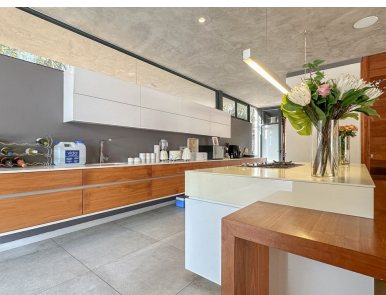
13 CUSSONIA WAY, SIMBITHI ECO ESTATE

Seeff



[youtube.com/c/seeffzimbali/](https://www.youtube.com/c/seeffzimbali/)

www.seeff.com: RLS966290



CONTEMPORARY ENTERTAINERS HOME OVERLOOKING A GREENBELT IN SIMBITHI

 5  5  0

Welcome to this exceptional double-storey residence, perfectly situated on a sought-after street in the prestigious Simbithi Estate. This modern home is designed for both luxury and functionality, boasting a seamless integration of style and comfort. This home embodies elegance and sophistication, with its clean lines, modern finishes, and meticulous attention to detail. Whether you're entertaining or enjoying a quiet evening, this residence provides the perfect backdrop for a refined lifestyle.



Mel Naidoo

074 788 5665

mellini.naidoo@seeff.com

Scan here
to view
full listing



Land Size 1,721m²
Floor Size 498m²

Staff Accommodation No
Study Yes
Pets Allowed Yes

Rates R4,000.00
Estate Levy R3,180.00

