

HOME IS OUR STORY

FOR SALE R11,900,000

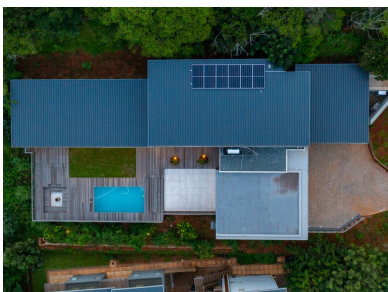
8 STRELITZIA PLACE, SIMBITHI ECO ESTATE

Seeff



youtu.be/pmkDLwQkBo8

www.seeff.com: RLS929621



IMMACULATELY PRESENTED HOME WITH INNOVATIVE DESIGN FEATURES

 4  4  2

Beautifully designed and presented new build - be the first to move into this amazing family home. Situated at the end of a quiet cul-de-sac with a sunny north-facing elevation this property will delight those who explore it. The ground floor living area opens up to an exceptional under-cover patio area that seamlessly combines interior and exterior spaces. Endless entertainment opportunities, an inviting firepit, and a refreshing pool will ensure guests are reluctant to leave. The gourmet kitchen with a waterfall stone top and gas hob serves the open-plan dining and lounge areas.



Andreas Wassenaar

082 837 9094

andreasw@seeff.com

Scan here
to view
full listing



Land Size 1,102m²
Floor Size 500m²

Staff Accommodation Yes
Study Yes
Pets Allowed Yes

Rates R2,016.50
Estate Levy R3,217.60

