

HOME
IS OUR
STORY

FOR SALE R36,000,000

52 UMVUMVU DRIVE, SIMBITHI ECO ESTATE

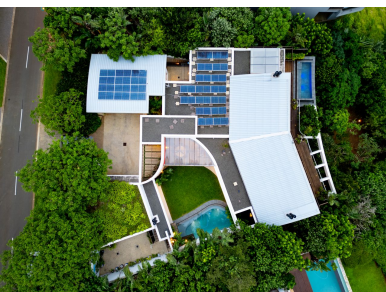
Seeff

DUAL MANDATE



youtu.be/Vy8Ueqt7jhs

www.seeff.com: RLS978234



ARCHITECTURAL MASTERPIECE EPITOMIZING LUXURY LIVING AND SOPHISTICATED DESIGN



4



5



4

Located along Simbithi's desirable sea-facing Umvumvu Drive is a gem waiting to be discovered by the most discerning of homeowners. Designed and crafted at the highest level of quality this remarkable residence demonstrates how elegance meets opulence most compellingly. The meticulous attention to detail, the seamless blending of natural elements with modern aesthetics and the intelligent use of light and space leave visitors mesmerized by its beauty.



Andreas Wassenaar

082 837 9094

andreasw@seeff.com

Scan here
to view
full listing



Land Size 1,784m²
Floor Size 530m²

Staff Accommodation No
Study Yes
Pets Allowed Yes

Rates R4,485.73
Estate Levy R3,465.00

