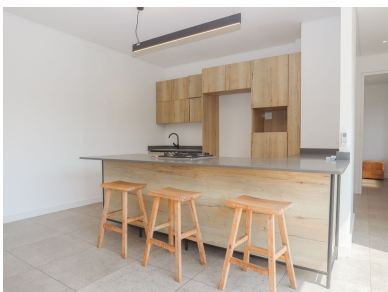


youtube.com/c/seeffzimbali/www.seeff.com: RLS989056

SINGLE-LEVEL LIVING IN ELALENI GARDENS



Discover the ease of single-level living in this beautifully designed, pet-friendly home at Elaleni Gardens. With its own private garden and light-filled interiors, this residence combines easy comfort with contemporary style, designed for relaxed coastal living. Designed with ease and versatility in mind, the open-plan living space suits both everyday living and entertaining. The kitchen and dining area sit side by side, creating a natural flow for family meals or casual hosting. The sunny garden extends directly from the living areas through wide sliding doors, offering a seamless setting for both indoor and outdoor living.

**Yeshlin Gounden****083 229 4309**yeshlin.gounden@seeff.com

Scan here
to view
full listing



Land Size 6,750m²
Floor Size -

Rates
Estate Levy R1,614.28
Sectional Title Levy R3,382.00
-

Pool No
Pets Allowed Yes

