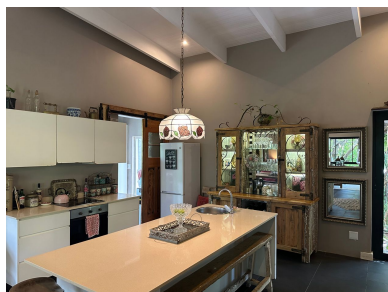




youtube.com/c/seeffzimbali/

www.seeff.com: RLS979280



ELEGANT FAMILY RETREAT ENCAPSULATED BY LUSH GREENERY

3 2 1

This charming 3-bedroom home in Dunkirk Estate provides an exceptional living experience with a spacious patio and an extended deck area that allows seamless access from all the bedrooms. The main bedroom features a private en-suite bathroom, while the two additional bedrooms share a well-appointed bathroom. The expansive lounge and dining room have a generous volume, creating a sense of openness and comfort throughout the living space. A cozy fireplace in the lounge area adds an inviting touch, perfect for those cold winter nights. The kitchen, though compact, exudes character and style,



Andreas Wassenaar

082 837 9094

andreasw@seeff.com

Scan here
to view
full listing



Land Size 752m²
Floor Size 213m²

Staff Accom No
Study No
Pets Allowed Yes

Rates R2,411.05
Estate Levy R3,658.00

