

HOME  
IS OUR  
STORY

**FOR SALE R9,995,000**

**53 FISH EAGLE DRIVE, BRETENWOOD COASTAL  
ESTATE**

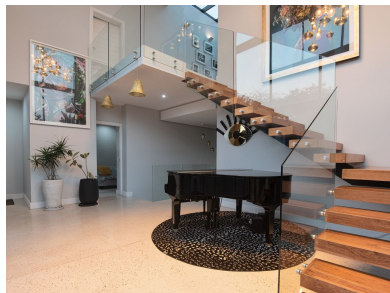
**Seeff**

**SOLE MANDATE**



[youtu.be/Rxx1SUWL00A](https://youtu.be/Rxx1SUWL00A)

[www.seeff.com: RLS964700](http://www.seeff.com: RLS964700)



## LUXURIOUS COASTAL SANCTUARY: EXQUISITE 3-LEVEL HOME WITH BREATHTAKING SEA VIEWS IN BRETENWOOD

 5  6  2

**\*EXCLUSIVE MANDATE\*** Presenting an unparalleled opportunity to own a truly one-of-a-kind property in the prestigious Brettenwood Coastal Estate. This exquisite residence, designed to epitomize luxury and exclusivity, offers spectacular sea views from both levels of the home. The grand double-volume entrance makes an immediate impression with its magnificent chandelier, expansive glass windows, and an elegantly crafted staircase.



**Yeshlin Gouden**

**083 229 4309**

[yeshlin.gouden@seeff.com](mailto:yeshlin.gouden@seeff.com)

**Scan here  
to view  
full listing**



**Land Size** 1,105m<sup>2</sup>  
**Floor Size** 760m<sup>2</sup>

**Staff Accom** Yes  
**Study** Yes  
**Pets Allowed** Yes

**Rates** R3,310.76  
**Estate Levy** R3,135.00

