



Reena Cassim
073 627 9301
reena.cassim@seeff.com

Contact Seeff North Coast

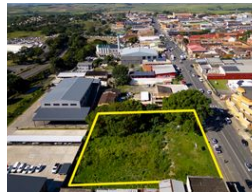
032 940 5005

Seeff Zimbali & North Coast Sales Centre
Nexus House, Office A
Zimbali Northgate Suites
Zimbali Estate 4422

STRATEGICALLY LOCATED COMMERCIAL LAND IN THE HEART OF KWADUKUZA



Web Ref 64672936



R8,000,000

Monthly Rates R1,592 Excl. VAT

STRATEGICALLY LOCATED COMMERCIAL LAND IN THE HEART OF KWADUKUZA

This is a rare chance to acquire a strategically located piece of commercial real estate in one of KwaZulu-Natal's fastest-growing urban centers. Positioned in the vibrant core of KwaDukuza, this exceptional vacant plot offers an unbeatable combination of visibility, accessibility, and long-term investment value.

The property enjoys a high-profile location directly adjacent to a busy shopping mall and is within easy walking distance of both a major government hospital and a respected private medical facility.

It sits in a zone with continuous pedestrian and vehicular traffic, making it an ideal setting for businesses that thrive on exposure to a steady stream of potential customers.

Surrounded by an active and well-established mix of commercial enterprises—including retail shops, medical practices,

Features